

Test Block Bypass **MTB Series**

100 Amp/10K AIC/240 Volt Self-Contained Meter-Main



214MTB



U214MTB

APPLICATION

- Single meter position
- Designed to receive watt-hour meters that meet ANSI C12.10
- Overhead or underground feed
- Surface mount

CONSTRUCTION

- Type 3R construction
- Combination meter/main-safety socket with factory installed 100amp breaker and test/bypass facilities¹
- Snap type sealing ring included
- 5th jaw provision at nine o'clock – U/214MTB only
- Provisions for 2 AW base caps or hub kits on top – overhead units only
- Padlock provision
- Ring style

STANDARDS

- UL 67 listed, complies with ANSI C12.7

FINISH

- ANSI 61 gray acrylic electrocoat finish

ACCESSORIES

- Fifth jaw kit — catalog #50371
- Center and offset pole mounting brackets
- Bussed gutters, see page 75
- AW hubs
- Screw type sealing ring — catalog #25016D
- Steel or clear lexan covers for socket opening

Overhead-Surface Mount

| CATALOG NUMBER | MAIN DISCONNECT | PROVISIONS | AIC RATING | AMPACITY MAX. CONT. | VOLTAGE | SERVICE TYPE | NUMBER OF JAWS | HUB PROV. | CONDUCTOR LUG RANGE | | | DIMENSIONS (INCHES) | | | |
|----------------|-----------------|------------|------------|---------------------|-------------------|--------------|----------------|-----------|---------------------|----------------------|-------------------|---------------------|------------|-----------|-----------|
| | | | | | | | | | PHASE LINE | CONDUCTOR LOAD | NEUTRAL CONDUCTOR | FIGURE NUMBER | HEIGHT (H) | WIDTH (W) | DEPTH (D) |
| 214MTB | (1) 100A 2P CB | NONE | 10K | 100 100 | 120/240 | 1Ø 3W | 4 | AW | 14 AWG - 2/0 AWG | MAIN CIRCUIT BREAKER | 14 AWG - 1/0 AWG | Fig. 1 | 38 | 12 | 4 5/8 |
| 215MTB | (1) 100A 3P CB | NONE | 10K | 100 100 | 240* | 3Ø 3W | 5 | AW | 14 AWG - 2/0 AWG | MAIN CIRCUIT BREAKER | 14 AWG - 1/0 AWG | Fig. 1 | 38 | 12 | 4 5/8 |
| 217MTB | (1) 100A 3P CB | NONE | 10K | 100 100 | 208/120 & 240/120 | 3Ø 4W | 7 | AW | 14 AWG - 2/0 AWG | MAIN CIRCUIT BREAKER | 14 AWG - 1/0 AWG | Fig. 1 | 38 | 12 | 4 5/8 |

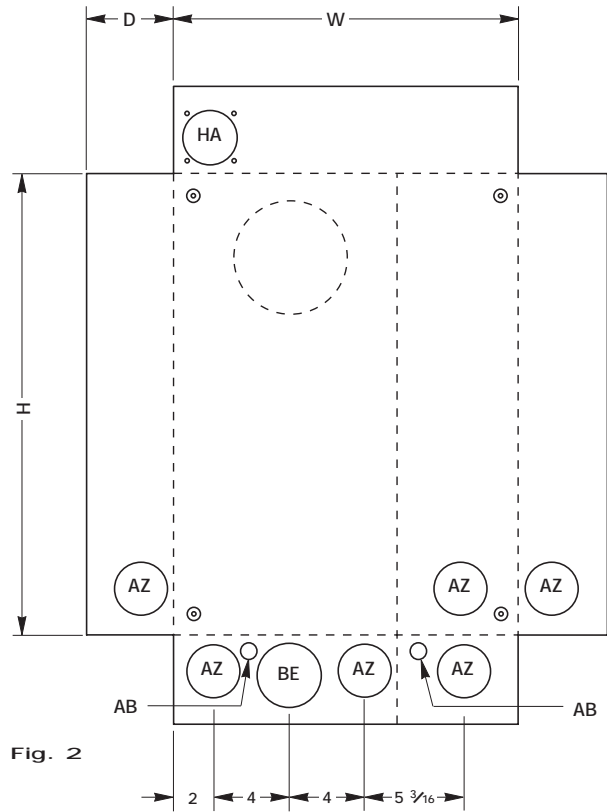
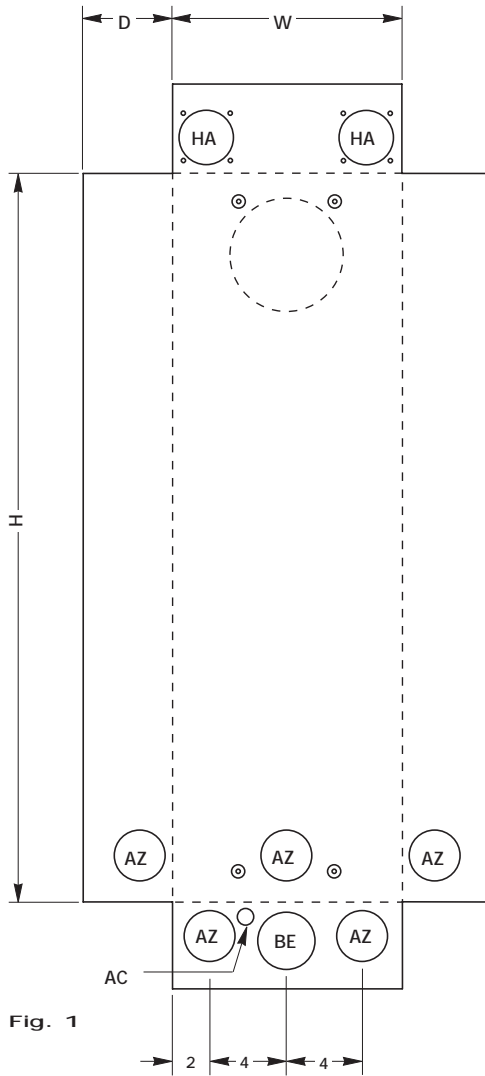
Overhead/Underground-Surface Mount

| CATALOG NUMBER | MAIN DISCONNECT | PROVISIONS | AIC RATING | AMPACITY MAX. CONT. | VOLTAGE | SERVICE TYPE | NUMBER OF JAWS | HUB PROV. | CONDUCTOR LUG RANGE | | | DIMENSIONS (INCHES) | | | |
|----------------|-----------------|------------|------------|---------------------|-------------------|--------------|----------------|-----------|---------------------|----------------------|-------------------|---------------------|------------|-----------|-----------|
| | | | | | | | | | PHASE LINE | CONDUCTOR LOAD | NEUTRAL CONDUCTOR | FIGURE NUMBER | HEIGHT (H) | WIDTH (W) | DEPTH (D) |
| U214MTB | (1) 100A 2P CB | NONE | 10K | 100 100 | 120/240 | 1Ø 3W | 4 | AW | 14 AWG - 2/0 AWG | MAIN CIRCUIT BREAKER | 14 AWG - 1/0 AWG | Fig. 2 | 24 | 18 | 4 5/8 |
| U215MTB | (1) 100A 3P CB | NONE | 10K | 100 100 | 240* | 3Ø 3W | 5 | AW | 14 AWG - 2/0 AWG | MAIN CIRCUIT BREAKER | 14 AWG - 1/0 AWG | Fig. 2 | 24 | 18 | 4 5/8 |
| U217MTB | (1) 100A 3P CB | NONE | 10K | 100 100 | 208/120 & 240/120 | 3Ø 4W | 7 | AW | 14 AWG - 2/0 AWG | MAIN CIRCUIT BREAKER | 14 AWG - 1/0 AWG | Fig. 2 | 24 | 18 | 4 5/8 |

¹ = 60-in. lbs torque recommended for circuit-closing nut

* For 208/120V, 1Ø 3W systems, order 4-jaw unit and a 5th jaw kit

For Safety Socket Bypass instructions see page 74.



Knockouts — Conduit Sizes

- AB = 1/2"
- AC = 1/2" - 1/4"
- AZ = 2" - 1 1/2" - 1 1/4" - 1"
- BE = 2 1/2" - 2" - 1 1/2" - 1 1/4"
- HA = AW HUB

Test Block Bypass **MTBMS84 Series - Vandal Proof Cover**

100 Amp/10K AIC/240 Volt Self-Contained Meter-Main

Test Block Bypass

4



214MTBMS84



U214MTBMS84

APPLICATION

- Single meter position
- Designed to receive watt-hour meters that meet ANSI C12.10
- Overhead or underground feed
- Surface mount

CONSTRUCTION

- Type 3R construction
- Combination meter/main–safety socket with factory installed 100amp breaker and test/bypass facilities¹
- Main breaker protected by padlockable steel cover
- Snap type sealing ring included
- 5th jaw provision at nine o'clock – U/214MTBHMS84 only
- Provisions for 2 AW base caps or hub kits on top – overhead units only
- Padlock provision
- Ring style

STANDARDS

- UL 67 listed, complies with ANSI C12.7

FINISH

- ANSI 61 gray acrylic electrocoat finish

ACCESSORIES

- Fifth jaw kit — catalog #50371
- Center and offset pole mounting brackets
- Bussed gutters, see page 75
- AW hubs
- Screw type sealing ring — catalog #25016D
- Steel or clear lexan covers for socket opening

Overhead–Surface Mount

| CATALOG NUMBER | MAIN DISCONNECT | PROV. | AIC RATING | AMPACITY MAX. CONT. | VOLTAGE | SERVICE TYPE | NUMBER OF JAWS | HUB PROV. | CONDUCTOR LUG RANGE | | | DIMENSIONS (INCHES) | | | |
|----------------|-----------------|-------|------------|---------------------|-------------------|--------------|----------------|-----------|---------------------|----------------------|-------------------|---------------------|------------|-----------|-----------|
| | | | | | | | | | PHASE LINE | CONDUCTOR LOAD | NEUTRAL CONDUCTOR | FIGURE NUMBER | HEIGHT (H) | WIDTH (W) | DEPTH (D) |
| 214MTBMS84 | (1) 100A 2P CB | NONE | 10K | 100 100 | 120/240 | 1Ø 3W | 4 | AW | 14 AWG - 2/0 AWG | MAIN CIRCUIT BREAKER | 14 AWG - 1/0 AWG | Fig. 1 | 38 | 12 | 4 5/8 |
| 215MTBMS84 | (1) 100A 3P CB | NONE | 10K | 100 100 | 240* | 3Ø 3W | 5 | AW | 14 AWG - 2/0 AWG | MAIN CIRCUIT BREAKER | 14 AWG - 1/0 AWG | Fig. 1 | 38 | 12 | 4 5/8 |
| 217MTBMS84 | (1) 100A 3P CB | NONE | 10K | 100 100 | 208/120 & 240/120 | 3Ø 4W | 7 | AW | 14 AWG - 2/0 AWG | MAIN CIRCUIT BREAKER | 14 AWG - 1/0 AWG | Fig. 1 | 38 | 12 | 4 5/8 |

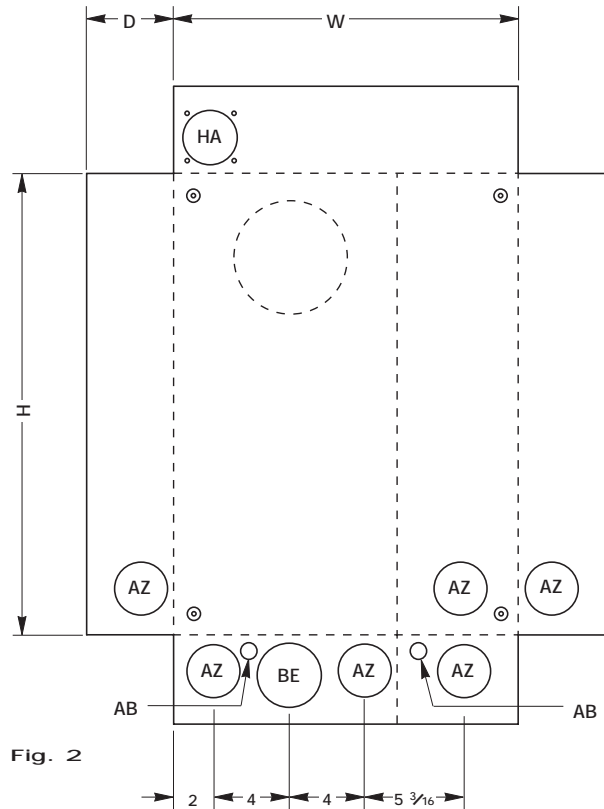
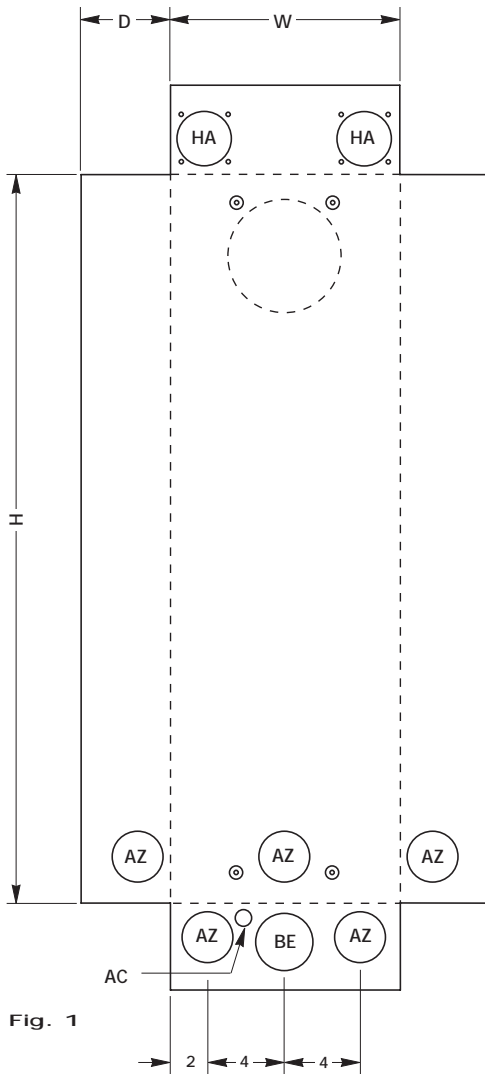
Overhead/Underground–Surface Mount

| CATALOG NUMBER | MAIN DISCONNECT | PROV. | AIC RATING | AMPACITY MAX. CONT. | VOLTAGE | SERVICE TYPE | NUMBER OF JAWS | HUB PROV. | CONDUCTOR LUG RANGE | | | DIMENSIONS (INCHES) | | | |
|----------------|-----------------|-------|------------|---------------------|-------------------|--------------|----------------|-----------|---------------------|----------------------|-------------------|---------------------|------------|-----------|-----------|
| | | | | | | | | | PHASE LINE | CONDUCTOR LOAD | NEUTRAL CONDUCTOR | FIGURE NUMBER | HEIGHT (H) | WIDTH (W) | DEPTH (D) |
| U214MTBMS84 | (1) 100A 2P CB | NONE | 10K | 100 100 | 120/240 | 1Ø 3W | 4 | AW | 14 AWG - 2/0 AWG | MAIN CIRCUIT BREAKER | 14 AWG - 1/0 AWG | Fig. 2 | 24 | 18 | 4 5/8 |
| U215MTBMS84 | (1) 100A 3P CB | NONE | 10K | 100 100 | 240* | 3Ø 3W | 5 | AW | 14 AWG - 2/0 AWG | MAIN CIRCUIT BREAKER | 14 AWG - 1/0 AWG | Fig. 2 | 24 | 18 | 4 5/8 |
| U217MTBMS84 | (1) 100A 3P CB | NONE | 10K | 100 100 | 208/120 & 240/120 | 3Ø 4W | 7 | AW | 14 AWG - 2/0 AWG | MAIN CIRCUIT BREAKER | 14 AWG - 1/0 AWG | Fig. 2 | 24 | 18 | 4 5/8 |

¹ = 60-in. lbs torque recommended for circuit-closing nut

* For 208/120V, 1Ø 3W systems, order 4-jaw unit and a 5th jaw kit

For Safety Socket Bypass instructions see page 74.



Knockouts — Conduit Sizes

- AB = 1/2"
- AC = 1/2" - 1/4"
- AZ = 2" - 1 1/2" - 1 1/4" - 1"
- BE = 2 1/2" - 2" - 1 1/2" - 1 1/4"
- HA = AW HUB