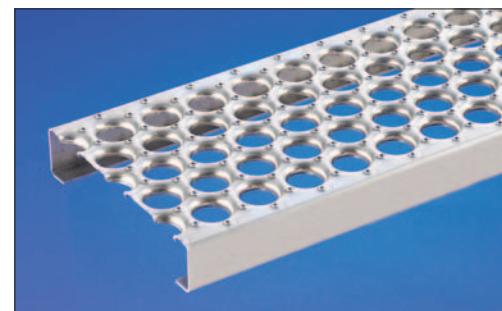
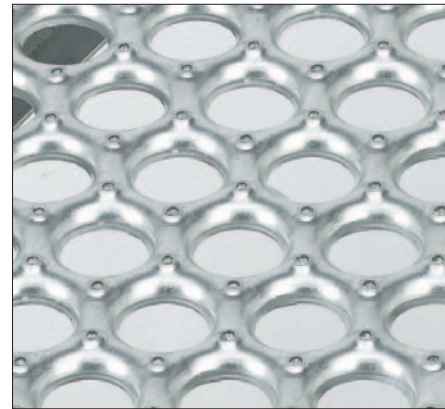


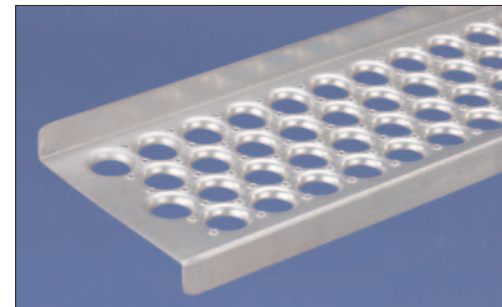
Table of Contents

General Information	3 - 4
Load Information	5
Perf-O-Grip Design Load Tables	
2-Hole Planks - 5" Width (Steel, Aluminum, Stainless Steel)	6
3-Hole Planks - 7" Width (Steel, Aluminum, Stainless Steel)	7
5-Hole Planks - 10" Width (Steel, Aluminum, Stainless Steel)	8
6-Hole Planks - 12" Width (Steel, Aluminum, Stainless Steel)	9
10-Hole Planks - 18" Width (Steel, Aluminum)	10
13-Hole Planks - 24" Width (Steel)	11
16-Hole Planks - 30" Width (Steel)	12
Walkways - 24" & 30" Width (Steel)	13
Perf-O-Grip Accessories	
P-Bolt Seat	14
Mid Clip	15
J-Clip	15
Splice Plate Kits	16
Stair Treads & Carrier Plates	17
Traction Tread Flooring	18
Traction Tread Planks	19
Traction Tread Ladder Rungs	20
Perf-O-Grip Specifications	21 - 22
How To Order	22
Traction Tread Specifications	23

Perf-O Grip® Pattern

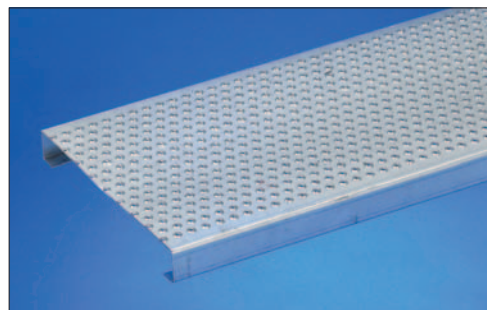
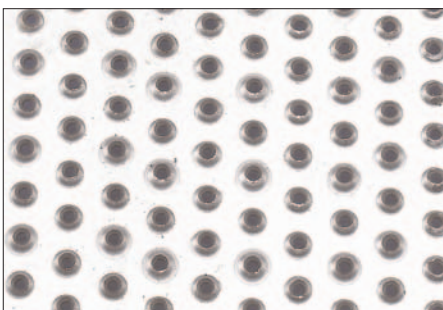


Perf-O Grip® Grating



Perf-O Grip® 2 Grating Available up to 12" wide

Traction Tread™ Pattern



Traction Tread Plank